

# CK250

STRENGTH IN WASTE



## GENERATE REVENUE WITH YOUR WASTE

The CK250 makes a 250kg cardboard bale that allows the user to generate revenue from his waste.

This machine is most suitable for retail shops, factories and logistic centres.

The large feed opening and the high compaction force of the CK250 ensures good bale density.

### BENEFITS

- \_ Produces half mill-size bales that can be sold
- \_ Large feed opening
- \_ Mechanical bale ejection
- \_ Easy to use controls
- \_ Cardboard, paper, soft and hard plastic
- \_ Bale full indicator.



CK250 complies with EN16500 - European Standards for vertical balers.

### BALER DIMENSIONS

Height	2440mm
Width	1655mm
Depth	985mm
Weight	Approx 1120kg
Feed Opening (H x W)	590mm x 1040mm

### BALER PERFORMANCE

Compaction Force	16 tonnes
Cycle Time	55 seconds
Power Supply	3 x 415V, 50Hz
Motor	4kW
Noise Level	85dBA

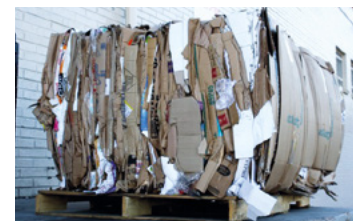
### BALE DIMENSIONS

Height	700mm
Width	1160mm
Depth	790mm
Bale Weight Cardboard (approx)	Up to 250kg
Bale Weight Plastic (approx)	Up to 280kg

### CK250

4 x Rolls of Tying Cord	12mm
Bale Ejection System	Mechanical

CK International reserves the right to alter specification without prior notice. Bale weights given are guidelines only, actual bale weights depend on operator and material baled.



CK International Ltd.  
38a Eglish Road  
Dungannon  
Co. Tyrone  
Northern Ireland  
BT70 1LA

T: +44 (0) 28 8775 3966  
F: +44 (0) 28 8772 5528  
info@ckinternational.co.uk  
www.ckinternational.co.uk